



Waste Water Treatment

Highlights

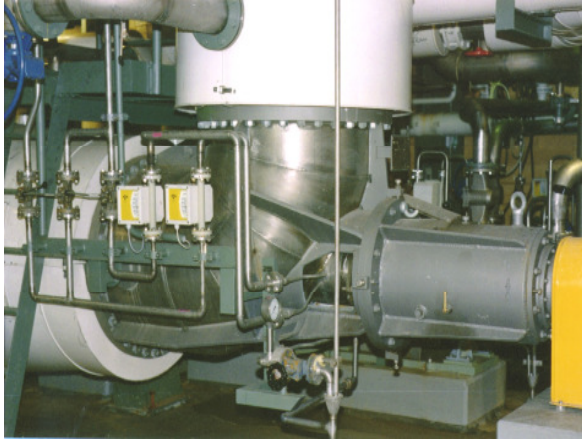
Evaporation of salty process waste waters to recover high quality salt (e.g. NaCl) which can be marketed. The contaminants are concentrated for minimum discharge.

Feedstocks:

Process waste waters containing salt and other contaminants.

Process Characteristics:

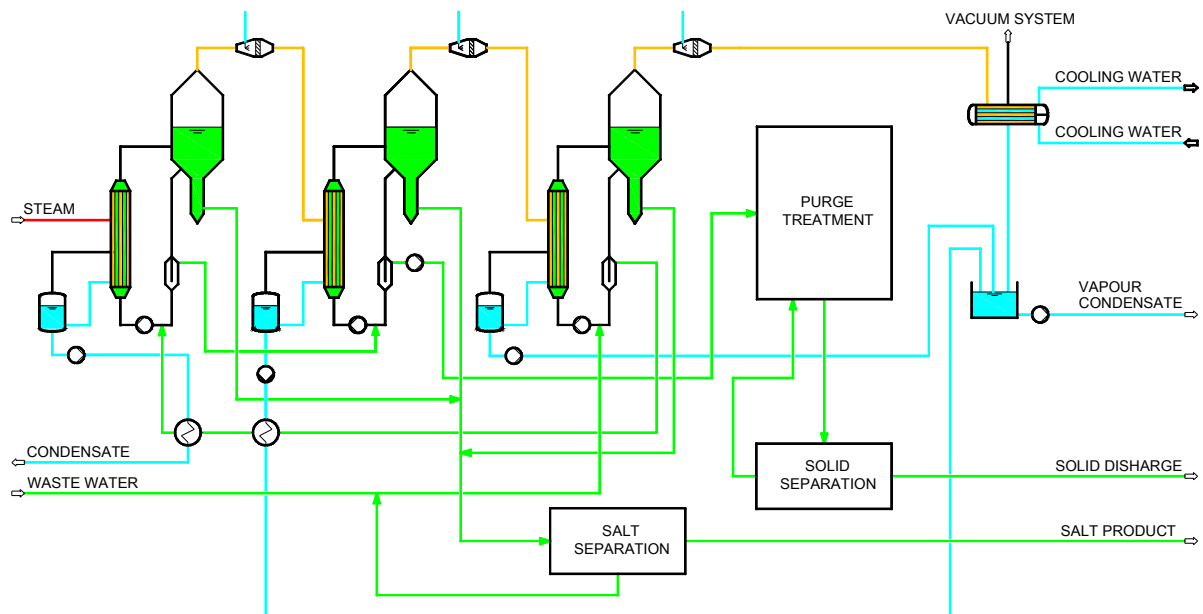
1. Pre-treatment by filtration to remove solid impurities and/or pH adjustment
2. Crystallization of high grade salt
3. High contaminant loadings can be handled
4. Liquid purge can be eliminated
5. Plant designed to minimise scaling



Circulation Pump



Centrifuge



Typical Flow Diagram

Plant Characteristics

- Multiple effect or MVR system to optimise energy costs
- Forced circulation evaporators to handle solids
- Centrifuge for salt separation and washing



SEP Salt & Evaporation Plants Ltd.
Neuwiesenstrasse 69
CH - 8400 Winterthur
Switzerland
Phone +41 52 260 50 70
Fax +41 52 260 50 80
info@sepwin.ch
www.sepwin.ch