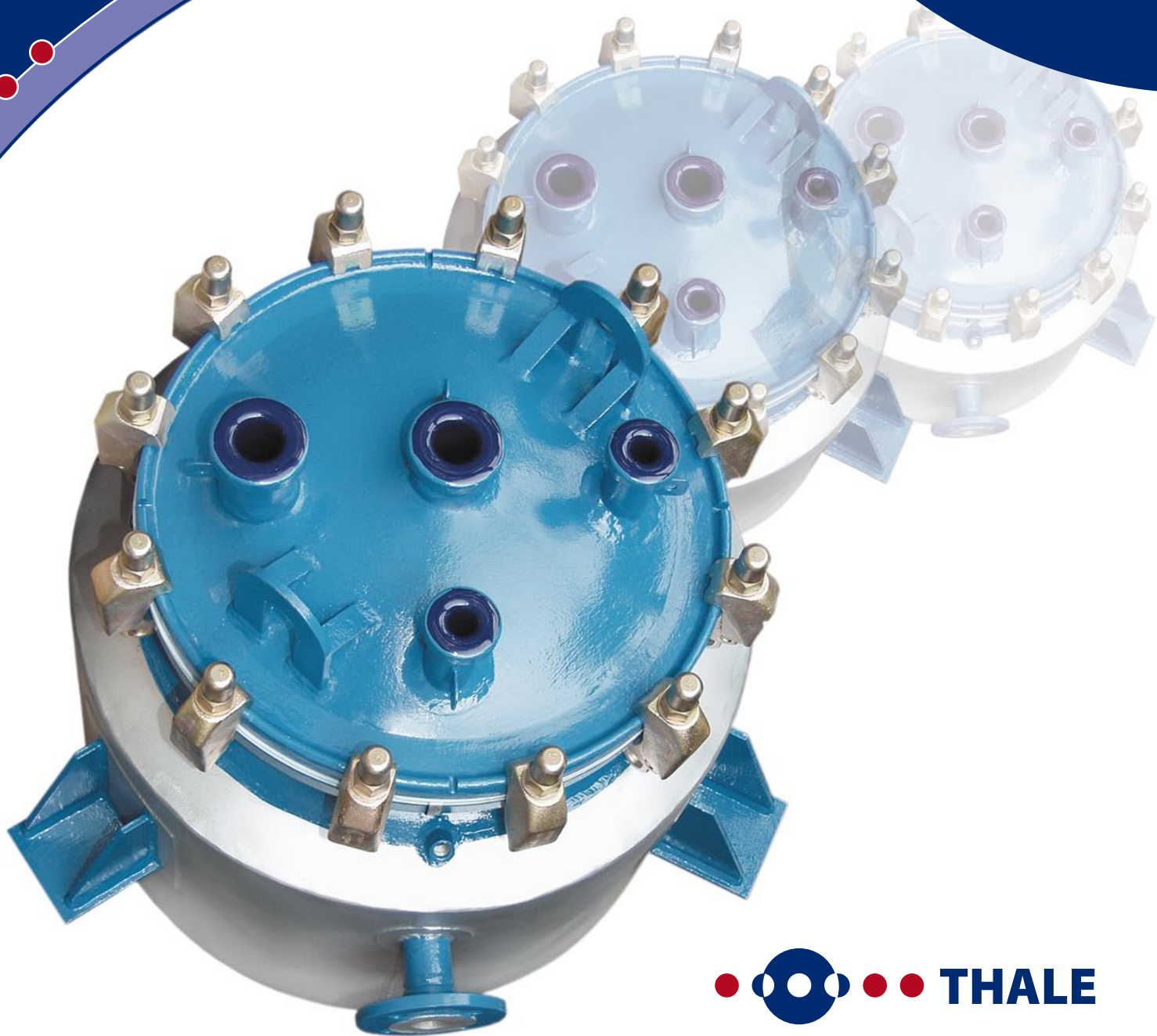


DIN-vessels BS – SZ/SZA
Vertical, capacity from
0.063 up to 0.63 m³
according to DIN 28018



VESSEL TYPE SZ/SZA

Standard Design

Pressure: inner vessel -1/6 bar
Jacket -1/6 bar (SZA)
Temperature: -25/+200 °C
Code: AD specifications, ASME IFBT test mark
(according to media list BAM)
Version: DGRL 97/23/EG
Module G

Materials

Vessel: P 275 NH (1.0487)
Glass-lining: RAS GLASS®
Clamp bolts: 24CrMo5, surface-treated
Gaskets: PTFE-enveloped flat seal
according to DIN 28148

Inspection

Water pressure test according to AD specification
Glass-lining test according to DIN 28063
High voltage test 20 kV/12 kV

Construction

Legs or brackets according to DIN 28145 – part 8*

Order example

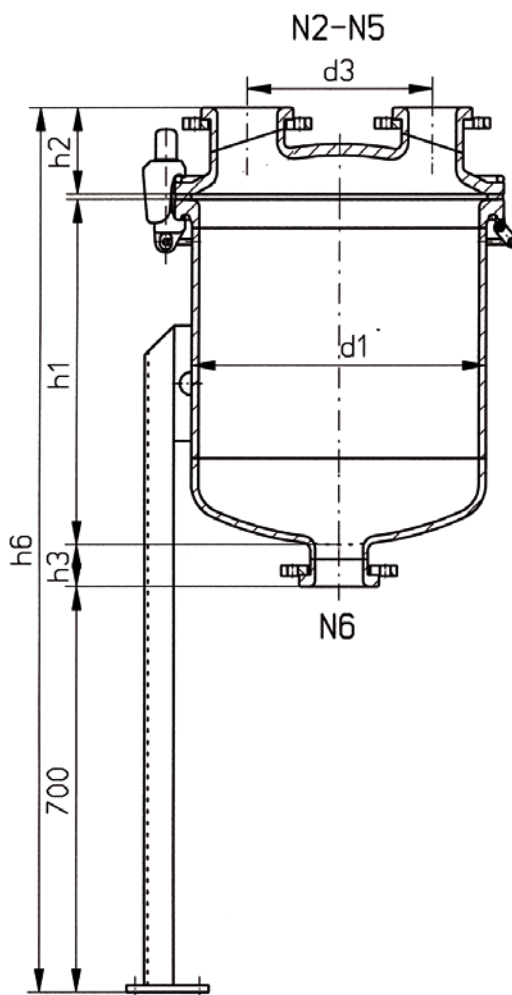
Vessel SZA – 0.40 – 800

Horizontal vessel type SZA with jacket
Nominal capacity 0.40 m³
Nominal diameter 800 mm

Order example

Vessel SZ – 0.63 – 1000

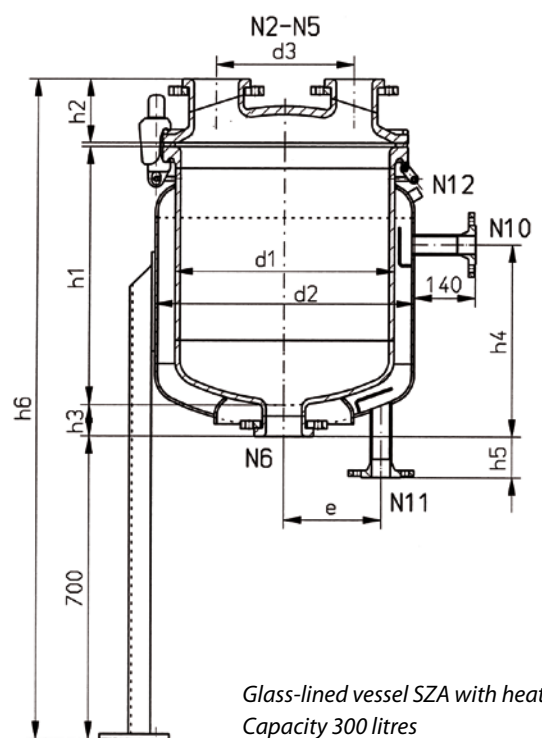
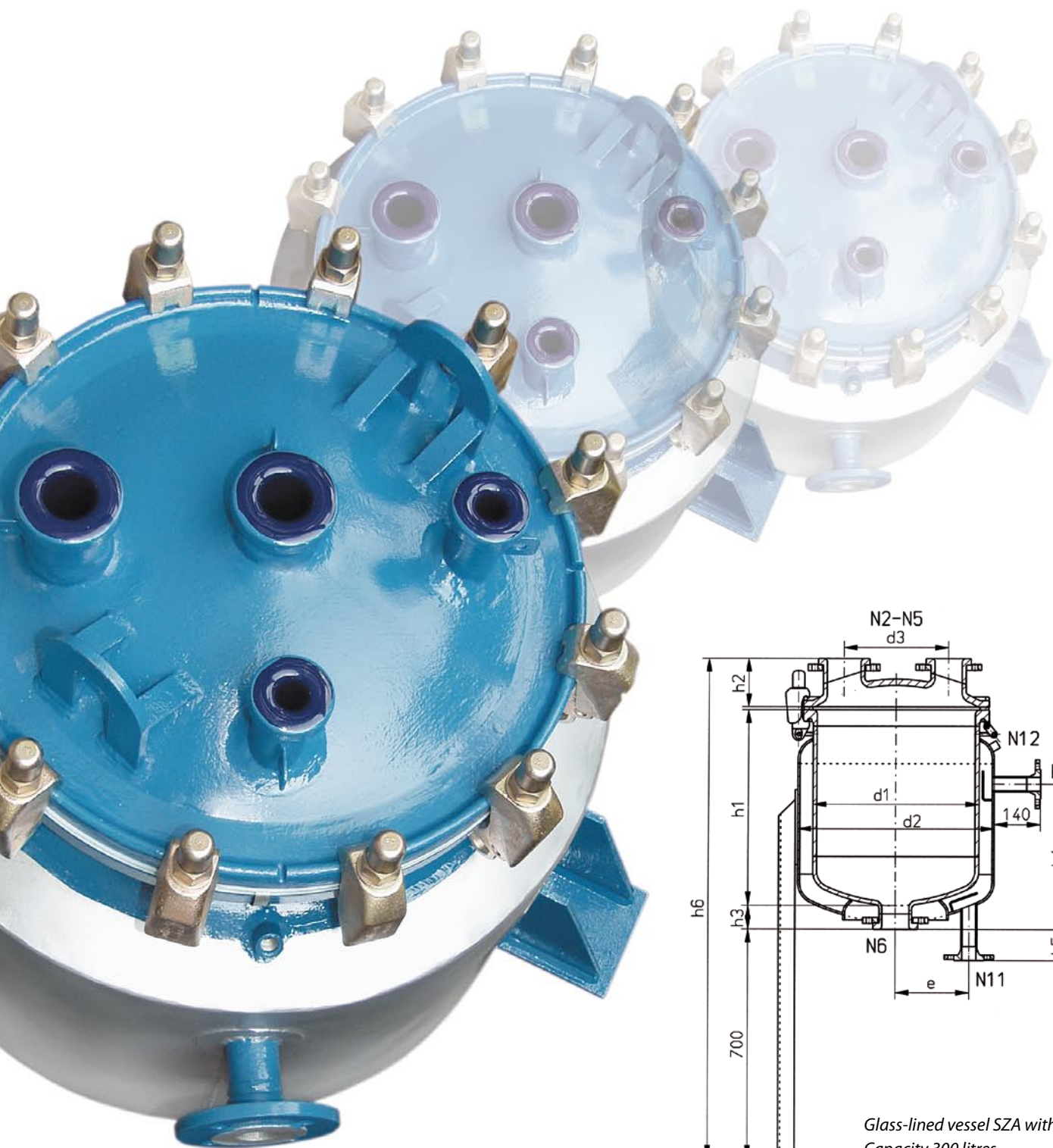
Horizontal vessel type SZ
Nominal capacity 0.63 m³
Nominal diameter 1000 mm



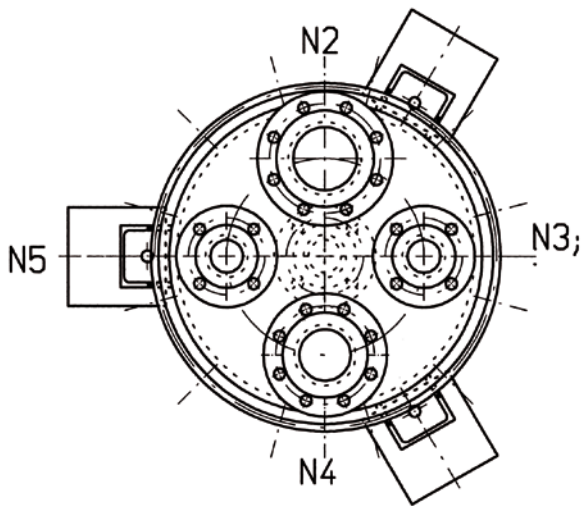
* Special design to order
Technical modifications reserved
Edition February 2004

Split vessel,
diameter 3000 mm,
capacity 26000 litres (Wacker-Chemie)

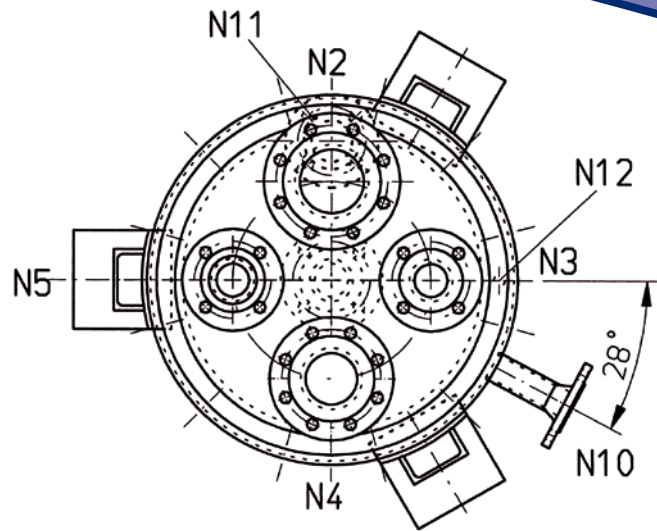




*Glass-lined vessel SZA with heating-jacket,
Capacity 300 litres*



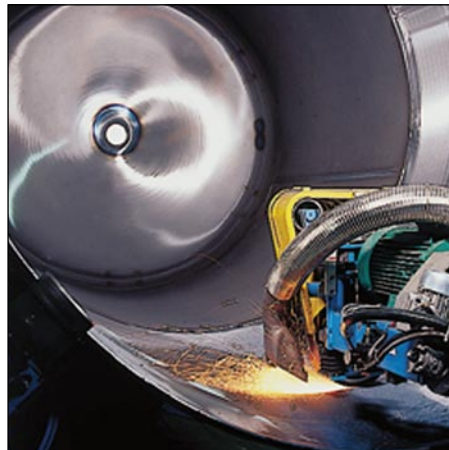
SZ-vertical vessel



SZA-vertical vessel, with jacket



Computer-controlled flame-cutting robots guarantee high-precision synchronous cutting resulting in precise fitting accuracy of neck and nozzles



Our inside grinding machine for bodies, dished ends and nozzles works entirely automatically. Perfectly ground steel surfaces form the ideal base for the glass-lining



Our submerged-arc automatic welding machine does material-friendly welding based on minimal heat effect for up to 100 m of weld seams per unit



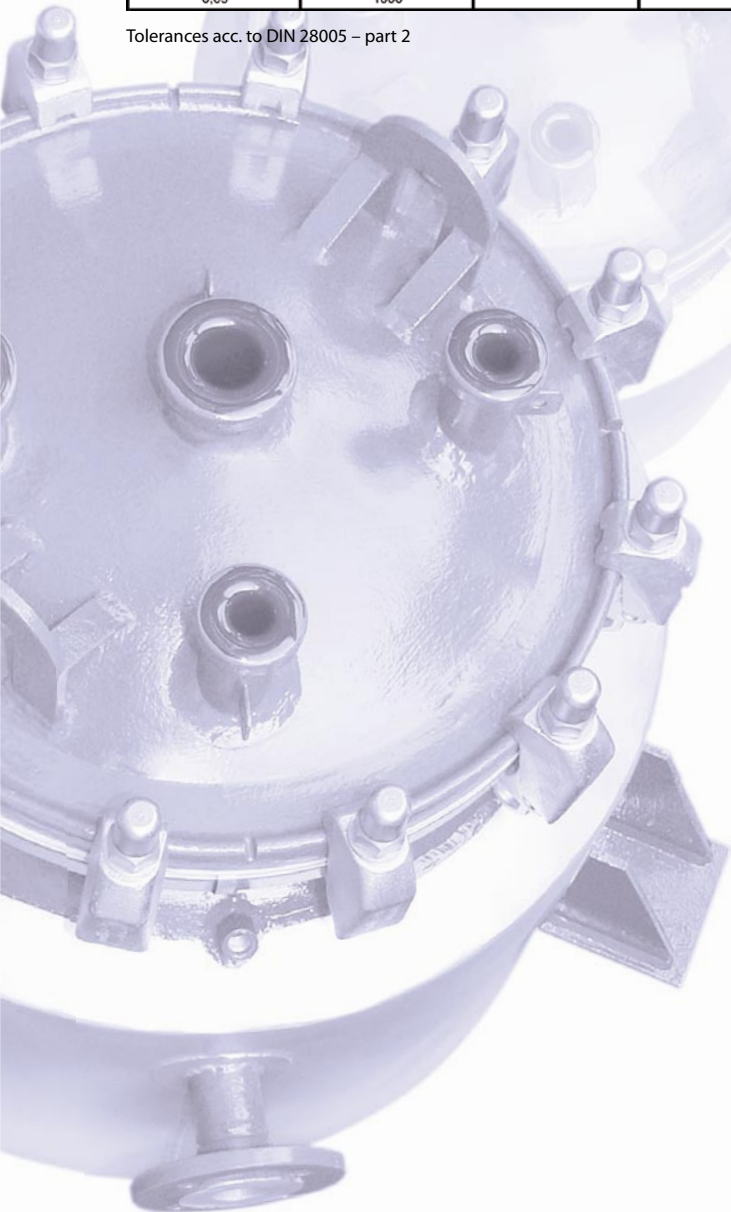
Bottom outlet valve (TBV) with pneumatic diaphragm drive

DIMENSIONS

Nominal capacity	Total capacity	Nominal diameter										weight = kg	weight = kg
m ³	l	d1	d2	d3	h1	h2	h3	h4	h5	h6 =	e	Form SZ	Form SZA
0,063	80	508	600	320	400	150	80	245	94	1340	225	200	250
0,10	120				600			445	94	1540		250	320
0,16	190	600	700	360	700	160		545	99	1650		350	450
0,25	295	700	800	440	800			630	102	1760		440	550
0,40	485	800	900	540	1000	170	90	830	76	1970	300	500	640
0,63	790	1000	1100	660		200		810	86	2000		700	920

Nominal capacity	Nominal diameter						
m ³	d1	N2	N3, N5	N4	N6	N10, N11	N12
0,063	508	100	50	80	80	40	G 1/2"
0,10	508						
0,16	600						
0,25	700						
0,40	800						
0,63	1000	80	100	50			

Tolerances acc. to DIN 28005 – part 2



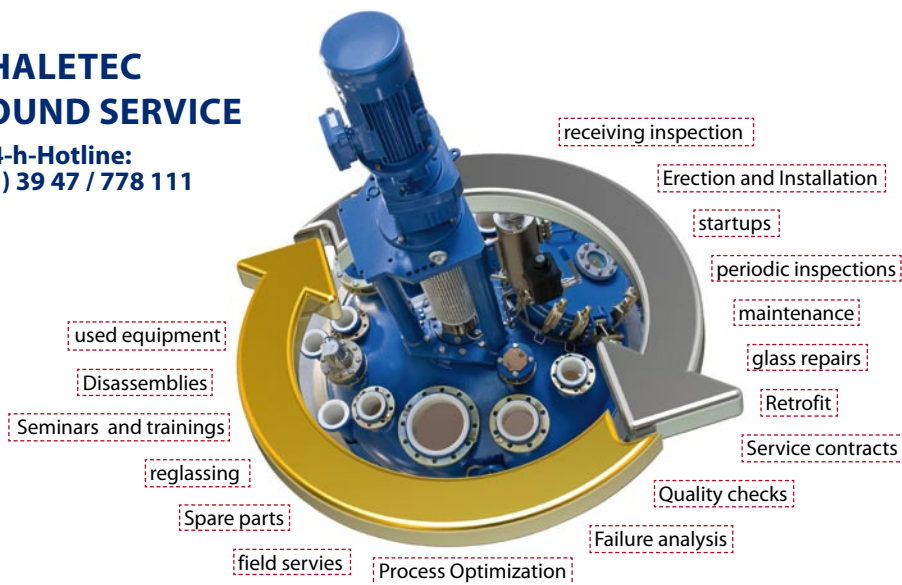
We would like to advise you regarding the advantages of glass lined equipment like:

- Glass lined reactors acc. to DIN 28136
- Glass lined Pharma Reactors
- Components for pharmaceutical and high purity applications
- Mixing technology for pharmaceutical and chemical industry
- Reactors for Polymerization
- Storage Tanks and Receivers
- Columns
- Heat Exchangers
- Sensor technology
- Accessories

www.thaletec.com

THALETEC ALL AROUND SERVICE

24-h-Hotline:
+ 49 (0) 39 47 / 778 111



THALETEC GmbH

Steinbachstraße 3
D - 06502 Thale

Telephone:

+ 49 (0) 3947-778 0

Facsimile:

+ 49 (0) 3947 778 110

service@thaletec.com

www.thaletec.com

