



Potassium Chloride Plants

Highlights

In the potash industry potassium chloride is separated from the Sylvinite leach solutions in modern DTB (Draft Tube Baffle) crystallisers under strictly controlled conditions to produce crystals with a closely defined Crystal Size Distribution.

Process Characteristics:

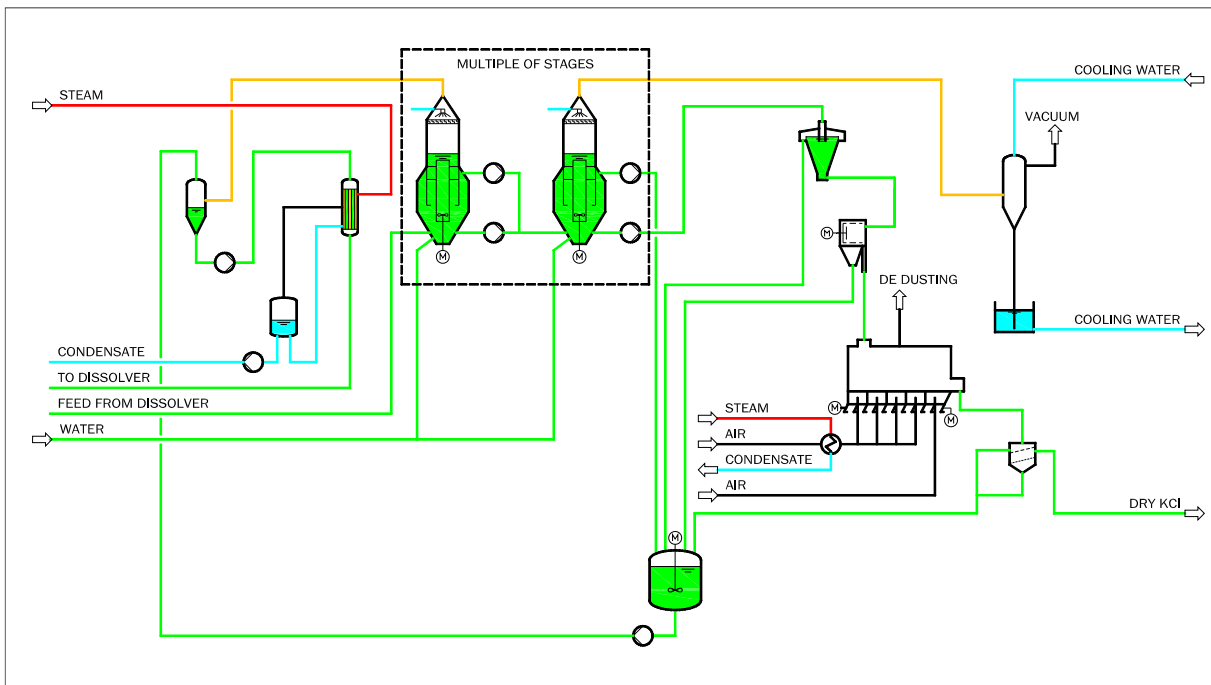
1. Crystal magma concentration is closely controlled to optimise their residence time and hence growth potential in the DTB
2. The slow moving internal circulation propeller minimises attrition of the crystals
3. Multiple effect systems to optimise heat economy
4. Heat recovery maximised by utilising the process vapour to preheat the return brine with either heat exchangers or direct contact heaters
5. Co-crystallization of NaCl avoided by close control of concentrations
6. Product purity achieved by washing in-situ on the centrifuges



Centrifuge



Fluid Bed Drier



Typical Flow Diagram

Plant Characteristics

- Typically four to six effects
- Special feeder system ensures constant feed rate to centrifuge
- Fluid bed drier with integrated cooler for exact moisture level in product
- High quality condensate recovered



SEP Salt & Evaporation Plants Ltd.
Neuwiesenstrasse 69
CH - 8400 Winterthur
Switzerland
Phone +41 52 260 50 70
Fax +41 52 260 50 80
info@sepwin.ch
www.sepwin.ch