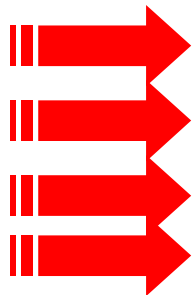


## Integrated Prethickner



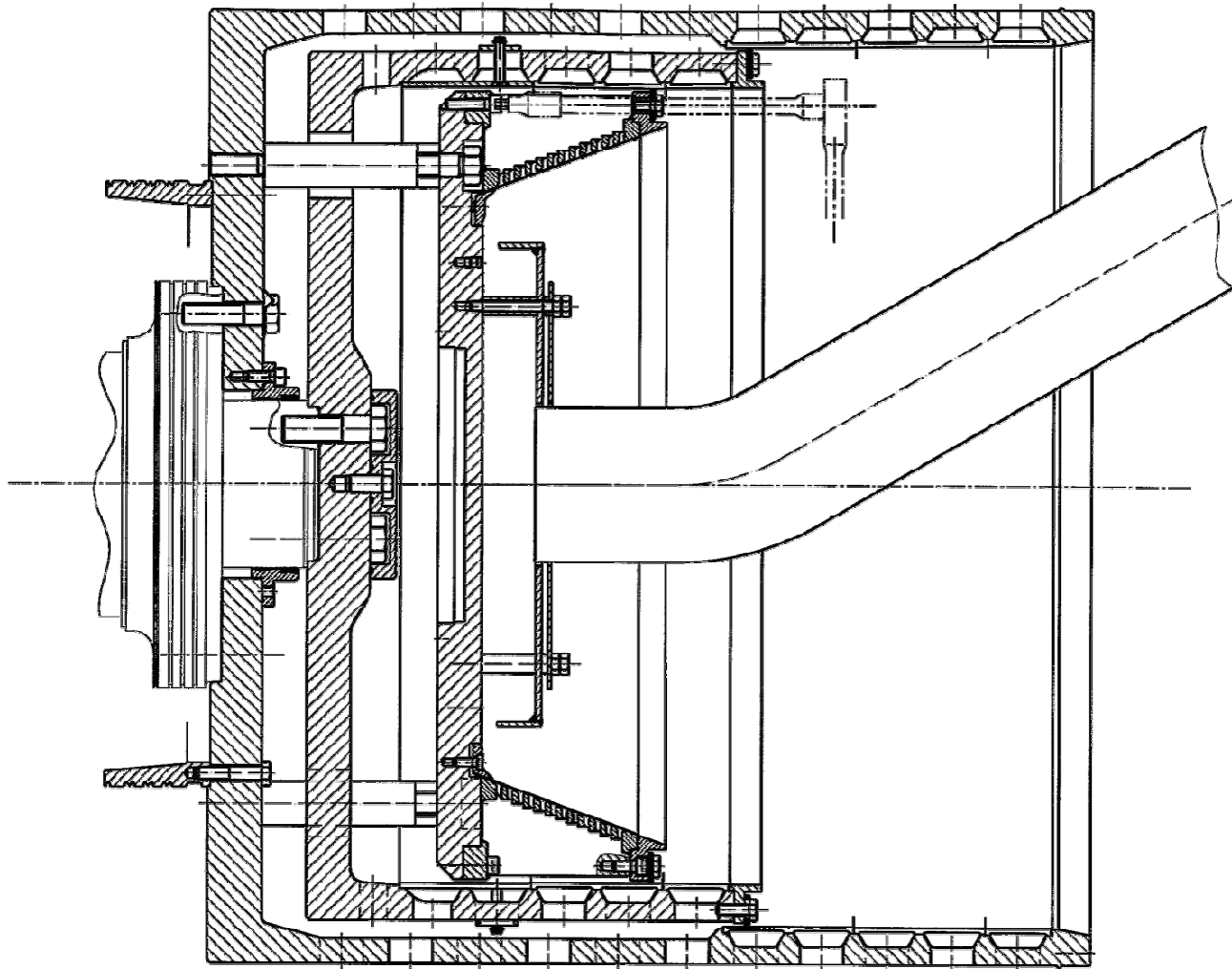
**Replaces external prethickner**

**Simple installation**

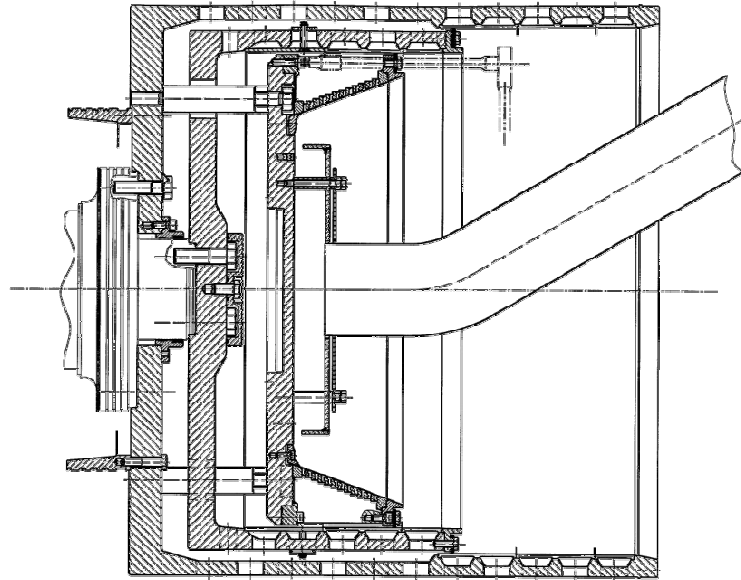
**Only for coarse and non-abrasive products**

**For products with low feed concentration**

## Integrated Prethickner



## Integrated Prethickner

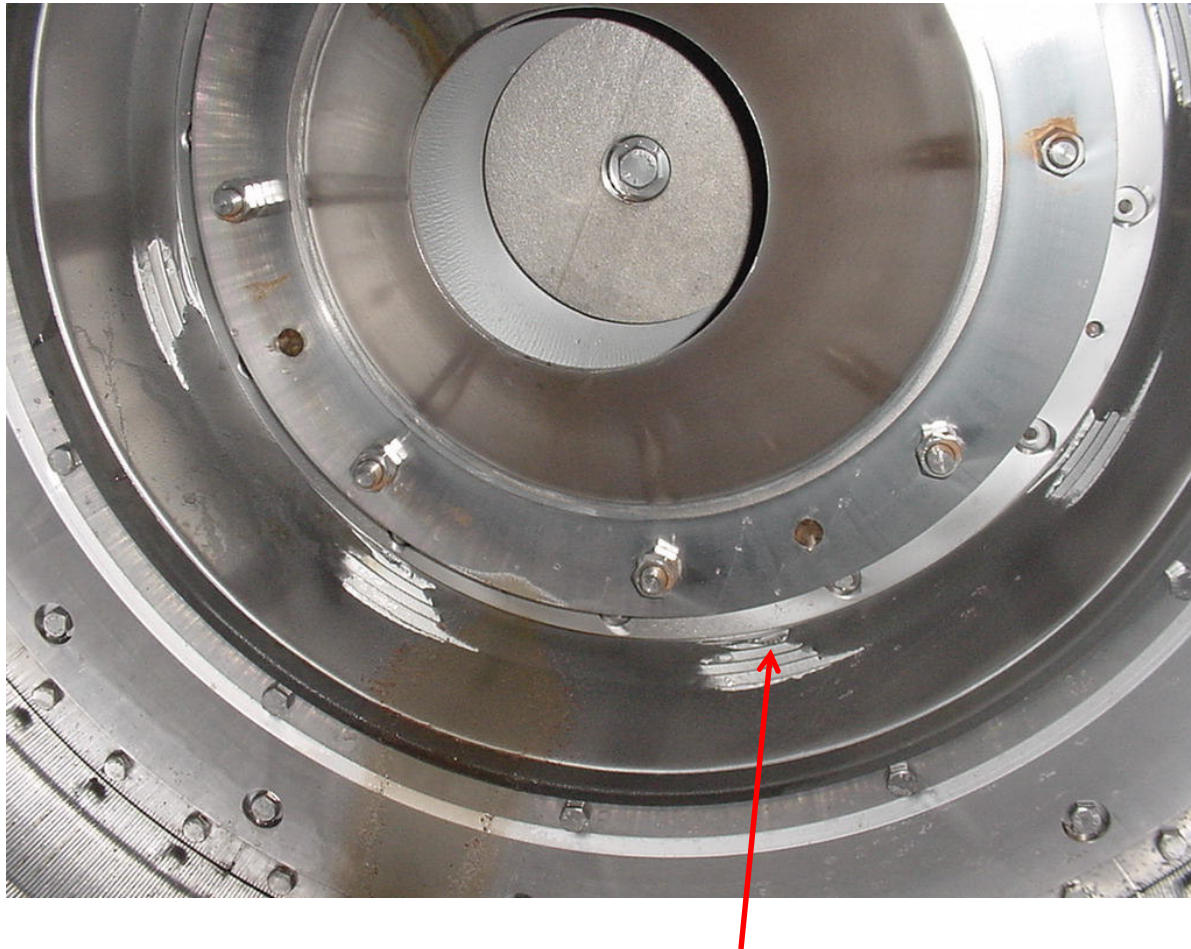


- Thin film filtration → Much higher filtration rate
- Low feed concentration possible
- Higher acceleration performance needed for same throughput (lower feed concentration)

## **Integrated Prethickner**

- **Sieve slots minimum 0.1 mm**
- **Thin film filtration means classification: Almost all particles with size  $<$  sieve slots size are in filtrate**
- **In reality only workable for particles  $>$  0.3 mm**
- **Crystal breakage somewhat smaller  $\rightarrow$  acceleration starts on smaller radius**
- **With abrasive products, durability of sieves is very limited, as sieves are very thin**

## Integrated Prethickner



Abrasion damaged sieves